

# PRECISION COOLING CABINET - 2K



## SRK PCC SERIES

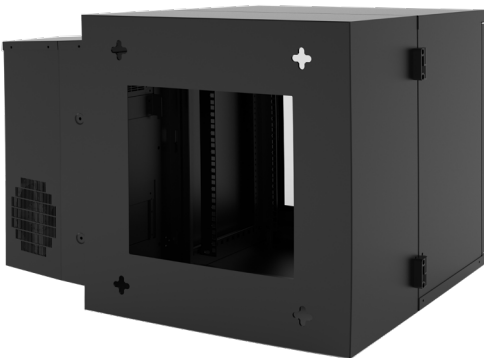
These self-contained air-conditioned wall mounted cabinets are an efficient *Precision Cooling* system ideal for use in remote “edge” locations and inhospitable operating environments that don’t have cooling infrastructure already in place. These steel cabinets with E-Coat finish are ideal for indoor locations that experience bandwidth limitations, latency issues, or unpredictable network disruptions. These cabinets - with air conditioners mounted on the side - protect the delicate electronics inside from moisture heat, dirt, and tampering.

Part Number (Includes AC Unit)	Rack Units	Overall Dimensions H x W x D in. (mm)	Weight Capacity*	Air Conditioner BTU (W)	Volts VAC
PCC12U-2428-2KBTU	12U	21.00" x 33.80" x 28.00" (533 x 857 x 711)	200 lbs. (91 kg.)	2,000 BTU (600 W)	115 V
PCC19U-2428-2KBTU	19U	33.25" x 33.80" x 28.00" (845 x 857 x 711)	200 lbs. (91 kg.)	2,000 BTU (600 W)	115 V



## CABINET FEATURES

- 12U or 19U rack space with 19" EIA reversible rails.
- 200 lbs. \*Dependent on secure mounting into proper structure.
- 28" overall depth, 16" usable depth.
- Fully gasketed, locking, front and swing-out section.
- E-Coat finish providing NEMA T12 & 4 Rating.
- Remote monitoring capability.
- Compatible with 2,000 BTU AC units.
- Cooling capacity approximately 600 W.



## AC FEATURES

- Designed to mount on the side of the enclosure.
- 115V / 2,000 BTU.
- Digital temperature controller with alarm.
- Built-in condensate evaporator.
- Efficient, quiet, long lasting rotary compressor.
- Environmentally friendly HFC refrigerant.
- Easy pull-out filter.
- UL Listed.

## CONSIDERATIONS

- What are the cooling needs of the equipment that will be housed in the wall mounted cabinet?
- What is the height and width of the smallest door or elevator on the path to installation?
- What is the size of the area where the wall mounted cabinet will be located? Be aware of hallways and traffic flow to ensure safe passage.
- Is there a dedicated receptacle -on the wall- capable of handling the power needs of an AC unit? The best practice would be the receptacle is internal to the enclosure to ensure no power interruptions.
- For retrofit jobs; the condition of the existing equipment, the type of rack it is currently housed in, and most importantly the length of service loop, if any, of the existing cable?

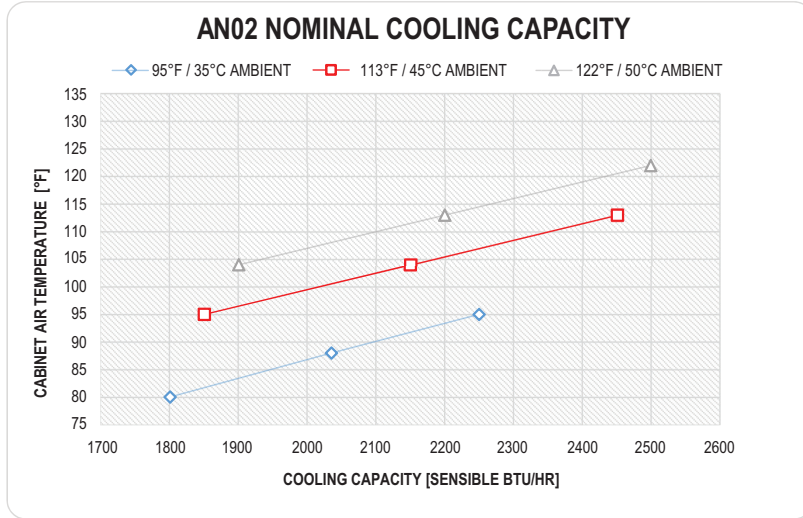


# PRECISION COOLING CABINET - 2K



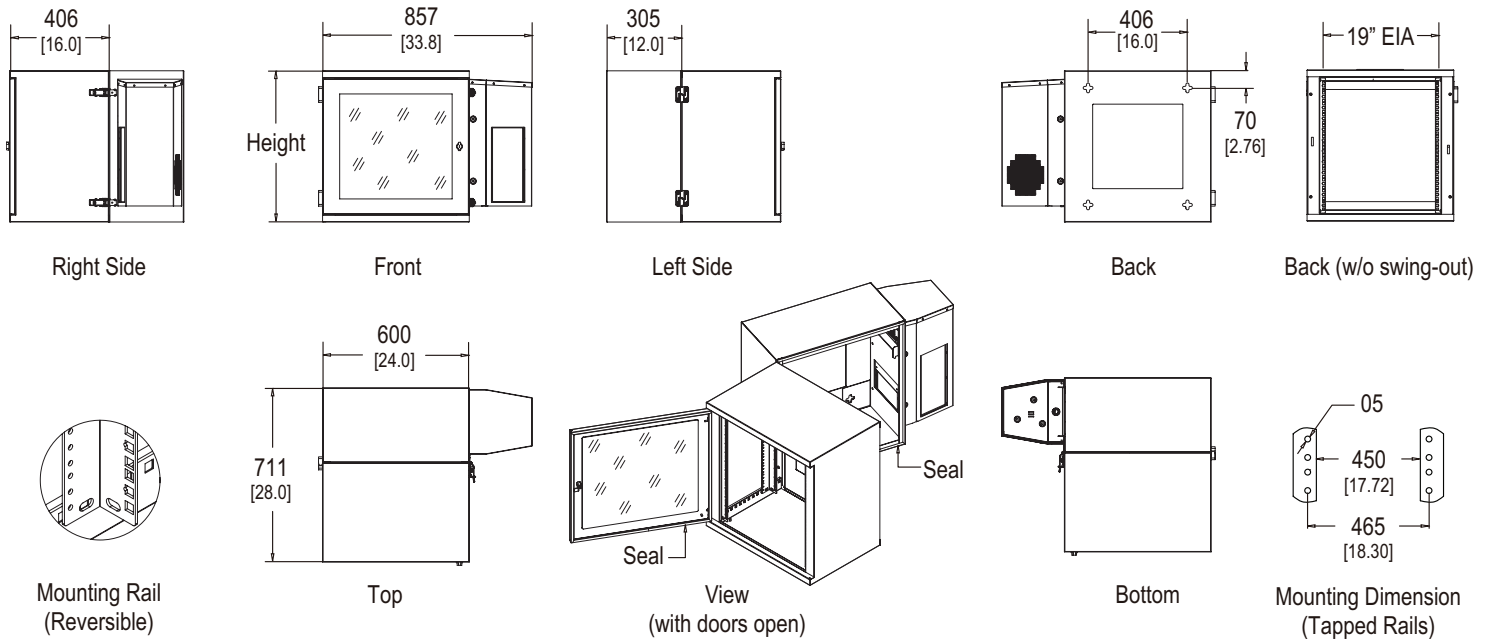
## AIR CONDITIONER SPECIFICATIONS

These air conditioning units are designed for high efficiency and high performance heat management of electronic enclosures or equipment. Operating temperature range [ -40° to 131°F ] [ -40°C to 55°C ]



Nominal Capacity	Voltage Input (VAC)	MCA (Amps)	H x W x D in. (mm)	AC Weight lbs. (kg.)
2,000 BTU	115	5.1	26.4" x 10.4" x 10.0" (670 x 264 x 254)	36.8 lbs. (16.7 kg.)

## TECHNICAL SPECIFICATIONS



©2023 Karis Technologies. All rights reserved. Karis Technologies™ and the Karis Technologies logo are trademarks or registered trademarks of Karis Technologies. All other names and logos referred to are trade names, trademarks, or registered trademarks of their respective owners. While every precaution has been taken to ensure accuracy and completeness, Karis Technologies assumes no responsibility and disclaims all liability for damages resulting from use of this information or for any errors or omissions. Specifications, rebates, and other promotional offers are subject to change at Karis Technologies' sole discretion upon notice.

