

PRECISION COOLING CABINET - 12K



SRK PCC SERIES

These self-contained air-conditioned server cabinets are an efficient *Precision Cooling* system ideal for use in remote “edge” locations and inhospitable operating environments that don’t have cooling infrastructure already in place. Locations that experience bandwidth limitations, latency issues, or unpredictable network disruptions. These cabinets - with NEMA rated air conditioners mounted on the side - protect the delicate electronics inside from moisture heat, dirt, and tampering. Simply put, these cabinets are a cost-effective alternative to installing a data center with a climate-controlled cooling system.

Part Number (Includes AC Unit)	Rack Units	Overall Dimensions H x W x D in. (mm)	Weight Capacity	Air Conditioner BTU (kW)	Volts VAC
PCC42U-2438-12KBTU	42U	80.50" x 36.50" x 38.00" (2042 x 926 x 965)	2000 lbs. (907 kg.)	12,000BTU (3.5kW)	208/230 V



CABINET FEATURES

- 42U rack space with 19" EIA square hole rails.
- 2,000 lbs. (907 kg.) static load capacity.
- 38" depth standard.
- Fully gasketed, locking, front and rear doors.
- Gland plate in top for cable entry/exit.
- Remote monitoring capability.
- Compatible with 12,000 BTU AC units.
- Cooling capacity approximately 3.5 kW.



AC FEATURES

- Designed to mount on the side of the enclosure while maintaining NEMA 12, 3R, 4, or 4X integrity.
- 208/230V 12,000 BTU.
- Digital temperature controller with alarm.
- Built-in condensate evaporator.
- Efficient, quiet, long lasting rotary compressor.
- Environmentally friendly HFC refrigerant.
- Easy pull-out filter.
- UL Listed.

CONSIDERATIONS

- What are the cooling needs of the equipment that will be housed in the cabinet?
- What is the height and width of the smallest door or elevator on the path to installation?
- What is the size of the room where the cabinet will reside?
- Is there a dedicated receptacle -in the room- capable of handling the power needs of an AC unit?
- For retrofit jobs; the condition of the existing equipment, the type of rack it is currently housed in, and most importantly the length of service loop, if any, of the existing cable?

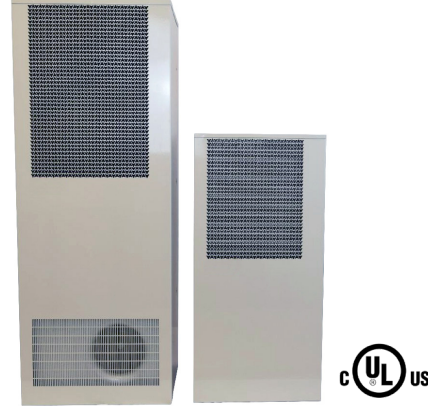
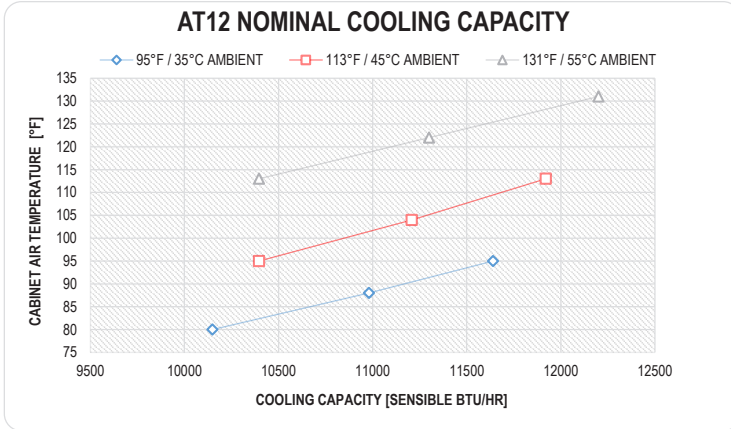


PRECISION COOLING CABINET - 12K



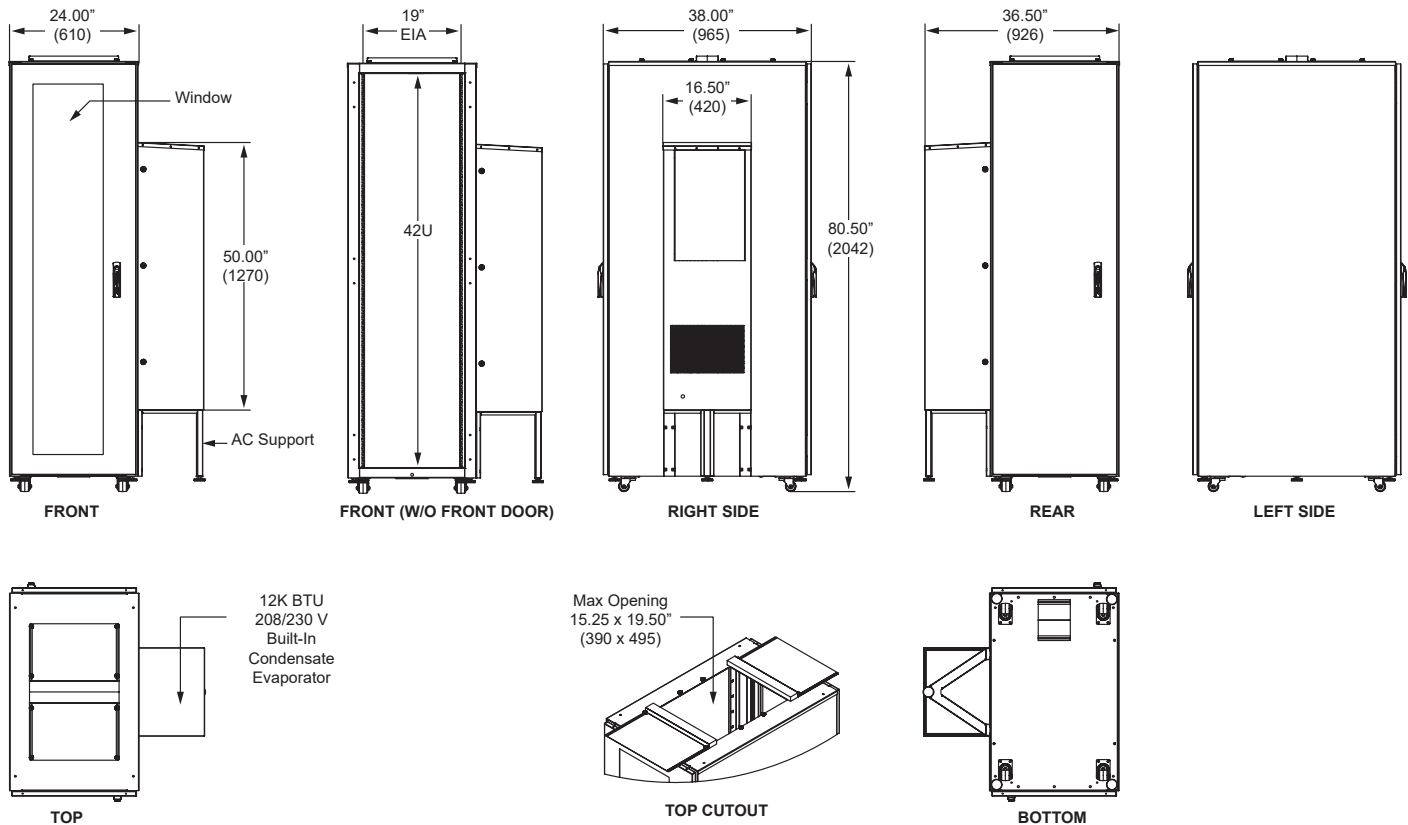
AIR CONDITIONER SPECIFICATIONS

These air conditioning units are designed for high efficiency and high performance heat management of electronic enclosures or equipment. Operating temperature range [-40° to 131°F] [-40°C to 55°C]



Nominal Capacity	Voltage Input (VAC)	MCA (Amps)	H x W x D in. (mm)	AC Weight lbs. (kg.)
12,000 BTU	208/230 V	11.7	50.00" x 16.50" x 12.30" (1270 x 420 x 310)	94.6 lbs. (42.9 kg.)

TECHNICAL SPECIFICATIONS



©2023 Karis Technologies. All rights reserved. Karis Technologies™ and the Karis Technologies logo are trademarks or registered trademarks of Karis Technologies. All other names and logos referred to are trade names, trademarks, or registered trademarks of their respective owners. While every precaution has been taken to ensure accuracy and completeness, Karis Technologies assumes no responsibility and disclaims all liability for damages resulting from use of this information or for any errors or omissions. Specifications, rebates, and other promotional offers are subject to change at Karis Technologies' sole discretion upon notice.

