

PRECISION COOLING CABINET - 42U / 12K

KARIS SRK PCC SERIES - Environmentally-Controlled Server Cabinets

These self-contained, climate-controlled server cabinets provide a cost-effective, efficient cooling solution for those who need to house IT equipment outside the data center. Ideal for remote locations, wiring closets, and industrial environments that lack existing cooling infrastructure, these cabinets enable users to install equipment without the need for additional cooling or costly infrastructure.

In smaller installations, users can save thousands by using an SRK PCC cabinet instead of installing a complete data center with custom cooling systems and raised floors. These cabinets are perfectly suited for edge locations that experience bandwidth limitations, latency issues, or unpredictable network disruptions.

The NEMA-rated air conditioners mounted on the side protect equipment from falling dirt; circulating dust, lint, and debris; and dripping or splashing liquids in indoor environments. The sealed cable entries prevent unwanted air exchange, while protecting delicate electronics inside from moisture, heat, dirt, and tampering.



Part Number (Includes AC Unit)	Rack Units	Overall Dimensions H x W x D in. (mm)	Weight Capacity	Air Conditioner BTU (kW)	Volts VAC
PCC42U-2438-12KBTU110V	42U	80.50" x 36.50" x 38.00" (2042 x 926 x 965)	2000 lbs. (907 kg.)	12,000BTU (3.5kW)	110/120 V

CABINET FEATURES

- 42U rack space with 19" EIA square hole rails
- 2,000 lbs. (907 kg.) static load capacity
- 38" depth standard
- Fully gasketed, locking front and rear doors
- Gland plate in top for secure cable entry/exit
- Remote monitoring capability
- Compatible with 12,000 BTU AC units
- Cooling capacity approximately 3.5 kW
- NEMA-rated for industrial environments

AIR CONDITIONING FEATURES

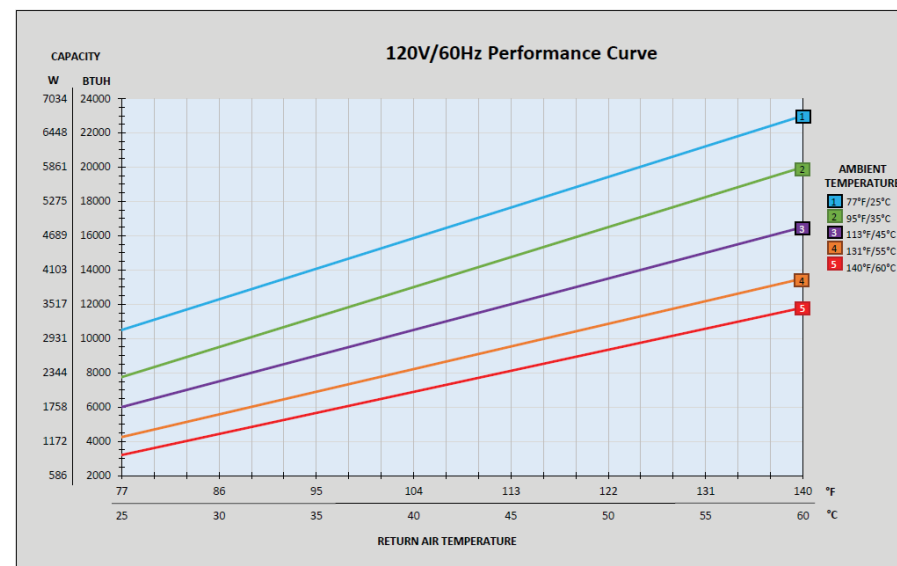
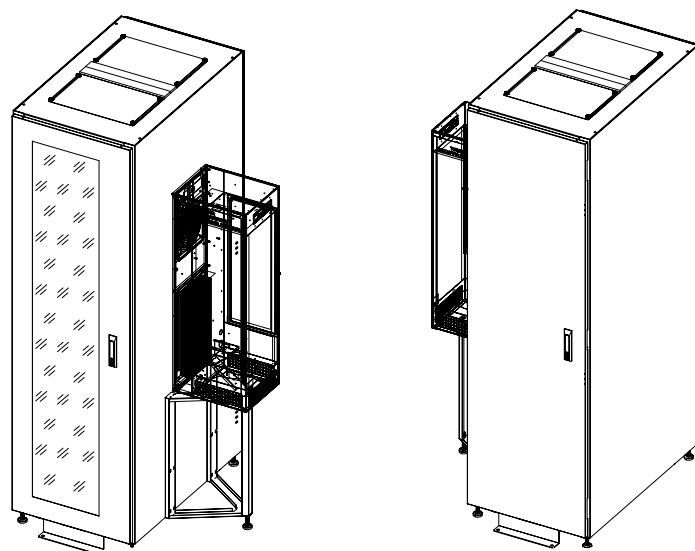
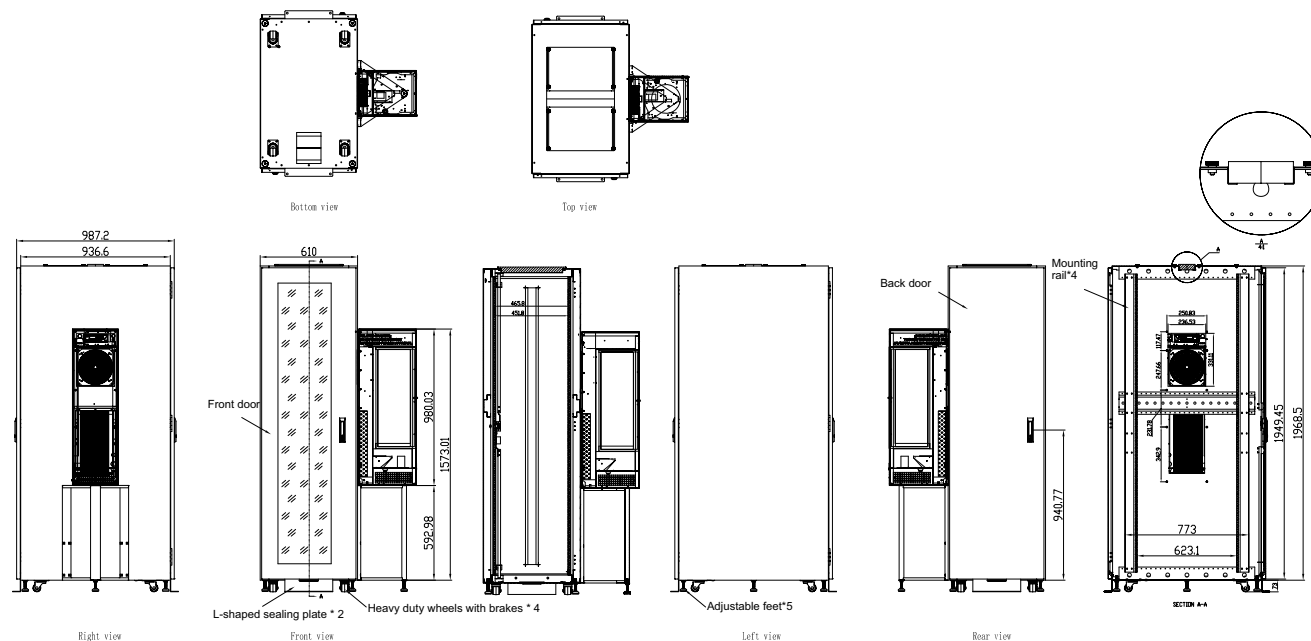
- Designed to mount on the side of enclosure while maintaining NEMA 12, 3R, 4, or 4X integrity
- 110/120V 12,000 BTU
- Digital temperature controller with alarm
- Built-in condensate evaporator
- Efficient, quiet, long-lasting rotary compressor
- Environmentally friendly HFC refrigerant
- Easy pull-out filter for simple maintenance
- UL Listed

CONSIDERATIONS

- What are the cooling needs of the equipment that will be housed in the cabinet?
- What is the height and width of the smallest door or elevator on the path to installation?
- What is the size of the room where the cabinet will reside?
- Is there a dedicated receptacle in the room capable of handling the power needs of an AC unit?
- For retrofit jobs: the condition of existing equipment, current rack housing, and most importantly the length of service loop of existing cables



PRECISION COOLING CABINET - 12K



DIMENSIONS	(H X W X D)	38.58 X 11.30 X 14.15 IN	980 X 287 X 359 MM
WEIGHT	120/220/230V 400/480V	116 LBS 140.5 LBS	52.6 KGS 63.7 KGS
COOLING CAPACITY ₁	A95°F / 95°F (A35°C / 35°C) A140°F / 140°F (A60°C / 60°C)	11500 BTUH 12250 BTUH	3370 W 3590 W
HEATING CAPACITY ₂	(BTUH / W)	3412/6824 BTUH	1000/2000 W
REFRIGERANT CHARGE	R407C @ 120V R407C @ 220/230/400/480V	43 Oz 41 Oz	1219 G 1162 G
AMBIENT TEMPERATURE RANGE	(°F / °C)	-40°F TO 140°F	-40°C TO 60°C
AIR VOLUME, CONDENSER OUTLET ₃ AIR VOLUME, EVAPORATOR OUTLET ₃	(CFM / M3 / H)	892 CFM 600 CFM	1516 M³/H 1019 M³/H
	68 dBA 70 dBA	5 FT AWAY + 3 FT HIGH 2 FT AWAY + 5 FT HIGH	1.52 M AWAY + 0.91 M HIGH 0.61 M AWAY + 1.52 M HIGH
NOISE LEVEL ₄	68 dBA 70 dBA	5 FT AWAY + 3 FT HIGH 2 FT AWAY + 5 FT HIGH	1.52 M AWAY + 0.91 M HIGH 0.61 M AWAY + 1.52 M HIGH
AMBIENT FILTER ₂	10 MICRON		
UNIT CONSTRUCTION	WELDED FRAME 316L STAINLESS STEEL -OR- POWDER COATED GALVANIZED		
FINISH TYPE ₂	316L STAINLESS STEEL GRAINED FINISH STANDARD POWDER COATED COLORS GRAY -OR- BEIGE CUSTOMER SPECIFIED POWDER COATED COLOR		
CORROSION PROTECTION ₂	HARSH ENVIRONMENT PROTECTION (CP3)		
CONDENSATION MANAGEMENT	EVAPORATION TRAY	STAINLESS STEEL WITH OVERFLOW CONNECTOR	
PROTECTION CLASSIFICATION ₅	IP66 / NEMA TYPE 12 / 3R / 4 / 4X		



FOOTNOTES

1. See performance curves for more details.
2. See features and options page for additional information.
3. Zero static pressure with free air flow at 60Hz. Tolerance is ±10% CFM/M³/H.
4. Results may vary depending on environment.
5. Protection classifications may not apply to all units, as certifications vary and are not standard across all units.

ELECTRICAL DATA

VOLTAGE	VOLTAGE TOLERANCE ¹	FREQUENCY	FREQUENCY TOLERANCE	NOMINAL POWER CONSUMPTION	NOMINAL RUNNING CURRENT	INTERNAL HEAT OPTIONS	MINIMUM CIRCUIT AMPACITY	MAXIMUM OVER-CURRENT PROTECTION	SCCR ²	CIRCUIT PROTECTION
120 V	±10%	60 HZ	±3Hz	2412 W	20.10 A	1000 W 2000 W	15.49 A 22.06 A	35 A 45 A	5kA	USE TIME DELAY FUSE OR TIME DELAY CIRCUIT BREAKER
220-230 V	+10%	50/60 HZ	±3Hz	2266/2369 W	10.30 A	1000 W 2000 W	11.13/6.60 A 11.99/11.49 A	25/20 A 30/20 A	5kA	USE TIME DELAY FUSE OR TIME DELAY CIRCUIT BREAKER
400 V	+10%	50/60 HZ	±3Hz	2088/2084 W	5.22/5.21 A	1000 W 2000 W	11.13/6.60 A 11.13/6.88 A	25/15 A 25/20 A	5kA	USE TIME DELAY FUSE OR TIME DELAY CIRCUIT BREAKER
480 V	+10%	50/60 HZ	±3Hz	2448/2443 W	5.10/5.09 A	1000 W 2000 W	11.13/6.60 A 11.13/6.60 A	25/15 A 25/15 A	5kA	USE TIME DELAY FUSE OR TIME DELAY CIRCUIT BREAKER

THERMAL CONTROL SETTINGS

FACTORY COOLING SYSTEM ON TEMPERATURE	80°F	26°C
FACTORY HEATING SYSTEM ON TEMPERATURE	50°F	10°C
FACTORY HIGH ENCLOSURE TEMPERATURE ALARM	131°F	60°C
FACTORY LOW ENCLOSURE TEMPERATURE ALARM	-20°F	-290°C
FACTORY HIGH CONDENSER TEMPERATURE ALARM	170°F	76°C
COOLING SYSTEM ON TEMPERATURE RANGE	70°F ↔ 124°F	21°C ↔ 52°C
HEATING SYSTEM ON TEMPERATURE RANGE	-4°F ↔ 63°F	-17°C ↔ 17°C

FOOTNOTES

- For 220-230V units minimum operating voltage is 208V.
- Depending on the application a higher SCCR rating could be achieved. Ask your certifying body.

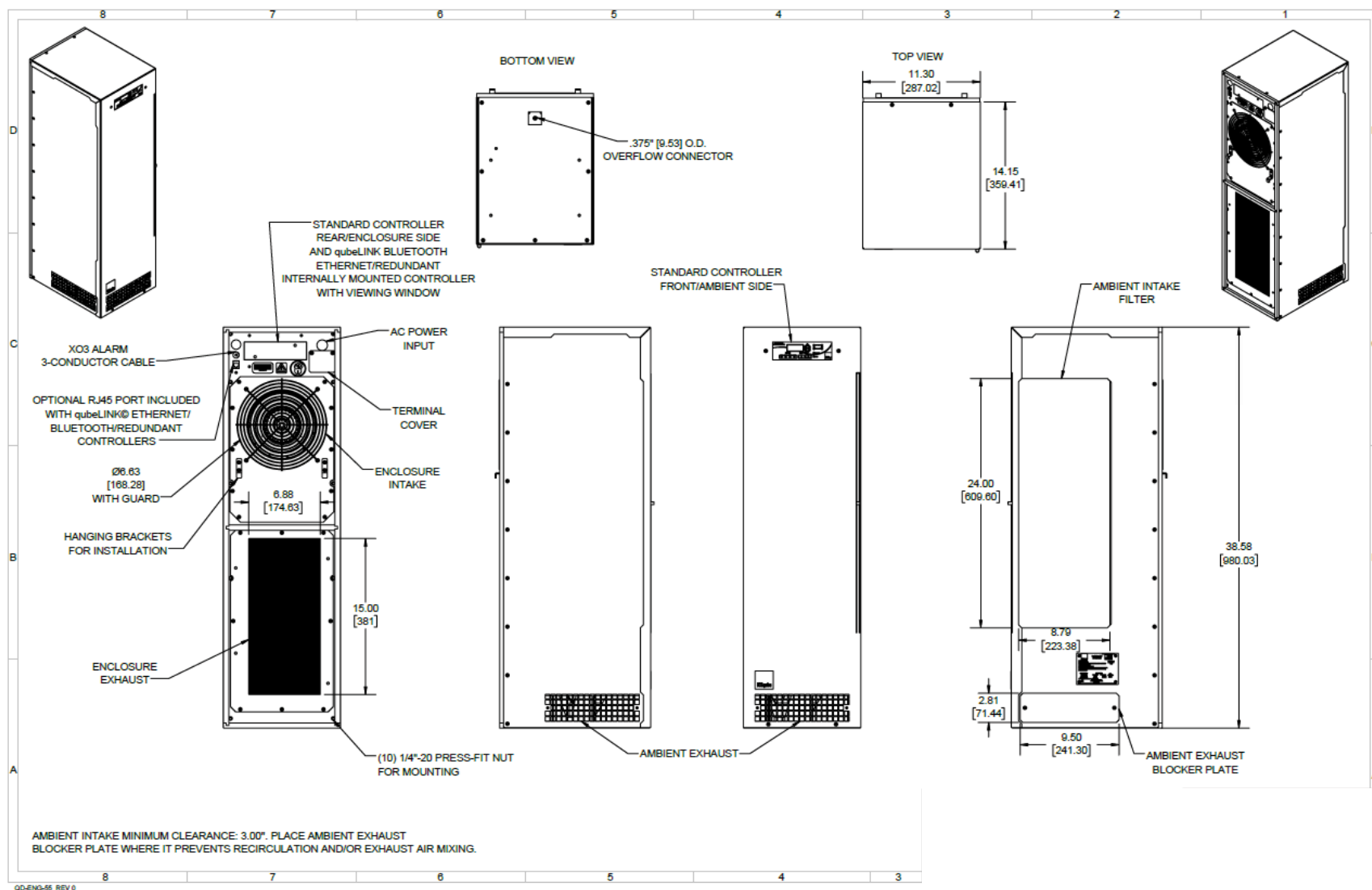
FEATURES AND OPTIONS

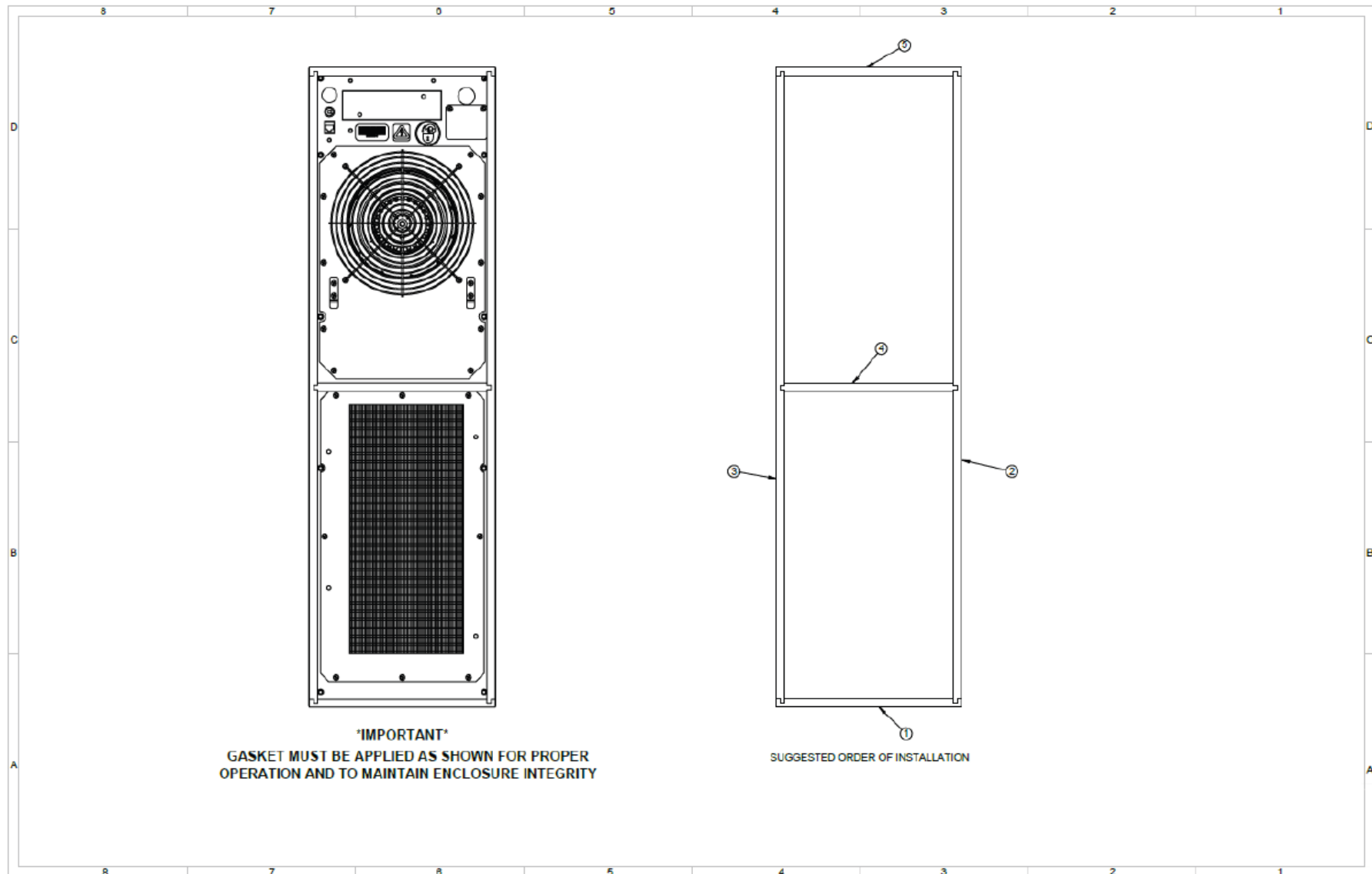
UNIT CONSTRUCTION ₁	
WELDED FRAME, 316L STAINLESS STEEL	
WELDED FRAME, POWDER COATED GALVANIZED STEEL	
FINISH TYPE ₂	
GY	GRAY, POWDER COATED GALVANIZED STEEL
BG	BEIGE, POWDER COATED GALVANIZED STEEL
CM	CUSTOM COLOR, POWDER COATED GALVANIZED STEEL
C316	CUSTOM COLOR, POWDER COATED 316L STAINLESS STEEL
S316	GRAINED FINISH, 316L STAINLESS STEEL
VOLTAGE ₂	
120 V	60 HERTZ
220–230 V	50 / 60 HERTZ
400 V	50 / 60 HERTZ
480 V	50 / 60 HERTZ
CORROSION PROTECTION	
CP3	HARSH ENVIRONMENT PROTECTION AGAINST GAS, SALT SPRAY, AND MOISTURE. HIGH FREQUENCY COATED COILS, ALL BRAZED JOINTS AND COPPER TUBING COATED.
NEMA TYPE/IP CLASSIFICATION	
N4	NEMA TYPE 3R /4 /12/IP66; ONLY FOR UNITS WITH A UNIT CONSTRUCTION OF WELDED FRAME, POWDER COATED GALVANIZED STEEL.
N4X	NEMA TYPE 3R /4X /IP66; ONLY FOR UNITS WITH UNIT CONSTRUCTION OF WELDED FRAME, 316L STAINLESS STEEL WITH C316 OR S316 FINISH TYPE.
CONTROLLER ₂	
STDF	STANDARD CONTROLLER FRONT/AMBIENT SIDE
STDR	STANDARD CONTROLLER REAR/ENCLOSURE SIDE
XCS	REMOTE STANDARD CONTROLLER
XCE	qubeLINK BLUETOOTH ETHERNET/REDUNDANT REMOTE MOUNTED CONTROLLER WITH VIEWING WINDOW
ETHR	qubeLINK BLUETOOTH ETHERNET/REDUNDANT INTERNALLY MOUNTED CONTROLLER WITH VIEWING WINDOW
ALARM	
X03	ALARM OUTPUT THAT PROVIDES BOTH A NORMALLY OPEN (CLOSED ON ALARM) AND A NORMALLY CLOSED (OPEN ON ALARM) SET OF DRY CONTACTS. THIS SIGNAL IS PROVIDED FROM A RELAY THROUGH A 3-CONDUCTOR CABLE.
AMBIENT FILTER ₂	
10FIL	10-MICRON FILTER
4FIL	4-MICRON FILTER
DEFL	DUST EATER FILTER

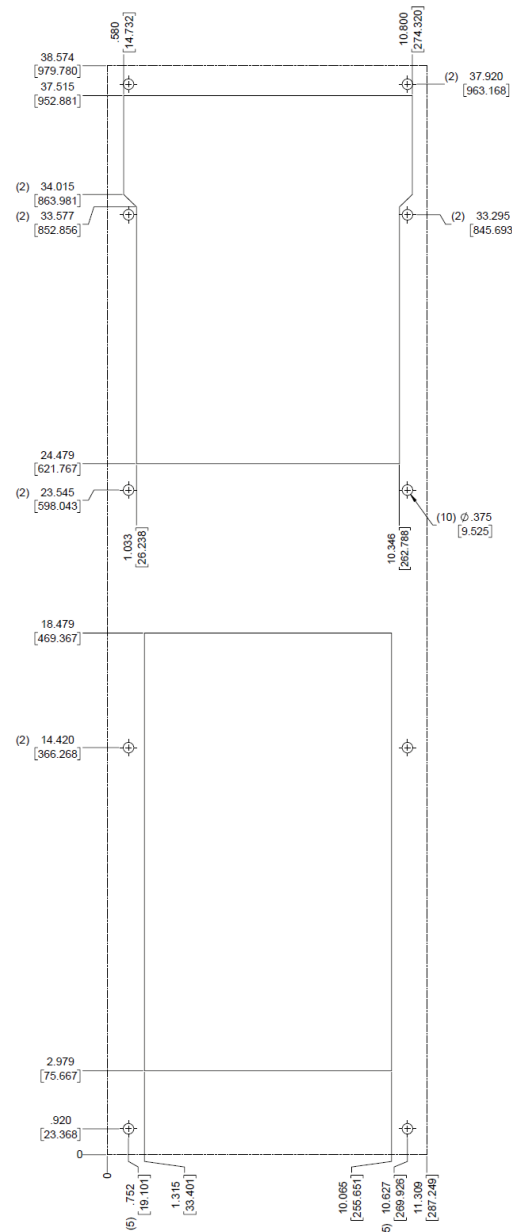
INTERNAL HEAT ₂	
IH20	INTERNALLY MOUNTED 2000 W HEATER. PROVIDES HEAT WHEN REQUIRED. THE CONTROLLER HAS BUILT IN DEAD BAND PROGRAM THAT PREVENTS HEATING AND COOLING FROM OPERATING SIMULTANEOUSLY.
IH10	INTERNALLY MOUNTED 1000 W HEATER. PROVIDES HEAT WHEN REQUIRED. THE CONTROLLER HAS BUILT IN DEAD BAND PROGRAM THAT PREVENTS HEATING AND COOLING FROM OPERATING SIMULTANEOUSLY.
WARRANTY	
1 YEAR	STANDARD WARRANTY
OPTIONS	
CNV	CONVERSION COLLAR FOR ADAPTING EXISTING ENCLOSURE CUTOUTS FROM OTHER ICE QUBE UNITS TO THE EV pro.
HOOD	AMBIENT EXHAUST HOODS FOR AIR DIRECTION, SECURITY, AND/OR WASHDOWN ENVIRONMENT. AVAILABLE IN ALL FINISH TYPES.
EHO	EXTERNAL HEAT OUTPUT TO POWER AND CONTROL ADDITIONAL EXTERNAL HEATER (CAN'T BE PAIRED WITH STDR CONTROLLER). AVAILABLE IN ALL FINISH TYPES.
LA	LOW AMBIENT PACKAGE FOR LOW AMBIENT ENVIRONMENTS.
TEMP	FULL SCALE ENCLOSURE CUTOUT DRAWING TEMPLATE.
DOOR	ENCLOSURE DOOR SWITCH INTERFACE FOR CONNECTING AC TO DOOR SWITCHES.
RS	EXTRA-LONG ENCLOSURE TEMPERATURE SENSOR WIRE FOR MOUNTING EXTERNAL TO THE UNIT.
PWRC	POWER CORD SUPPLIED INSTEAD OF STANDARD OPTION OF HARD WIRING TO TERMINAL BOX.

FOOTNOTES

- Unit construction is paired to finish type and NEMA Type/IP classification.
- Must choose one from category.

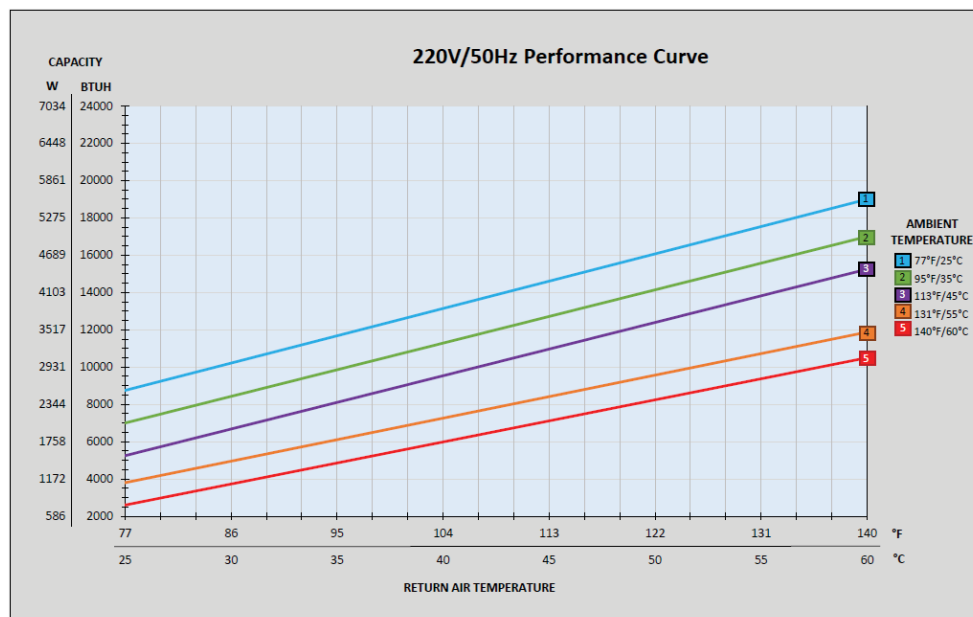
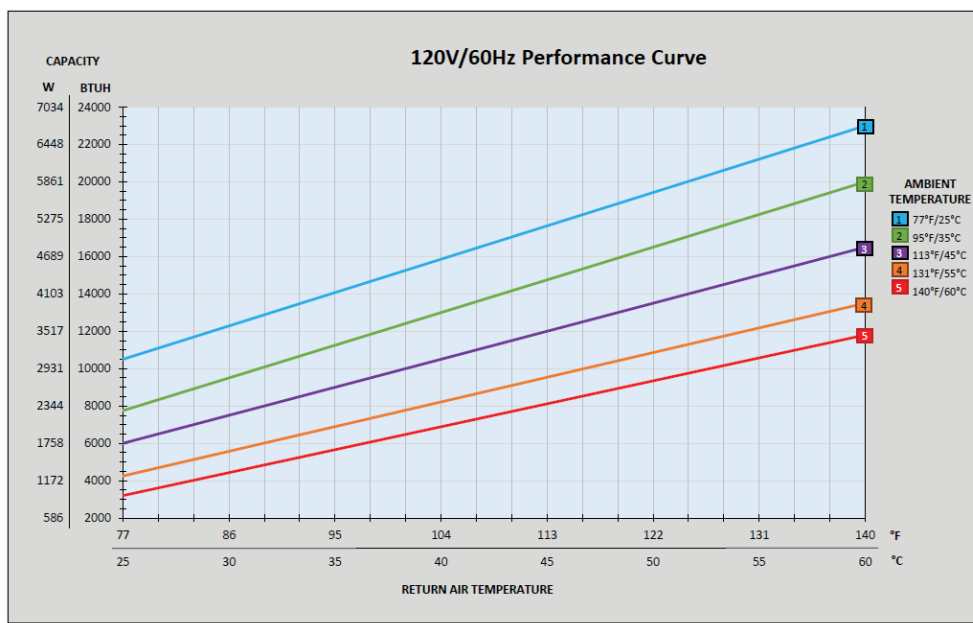


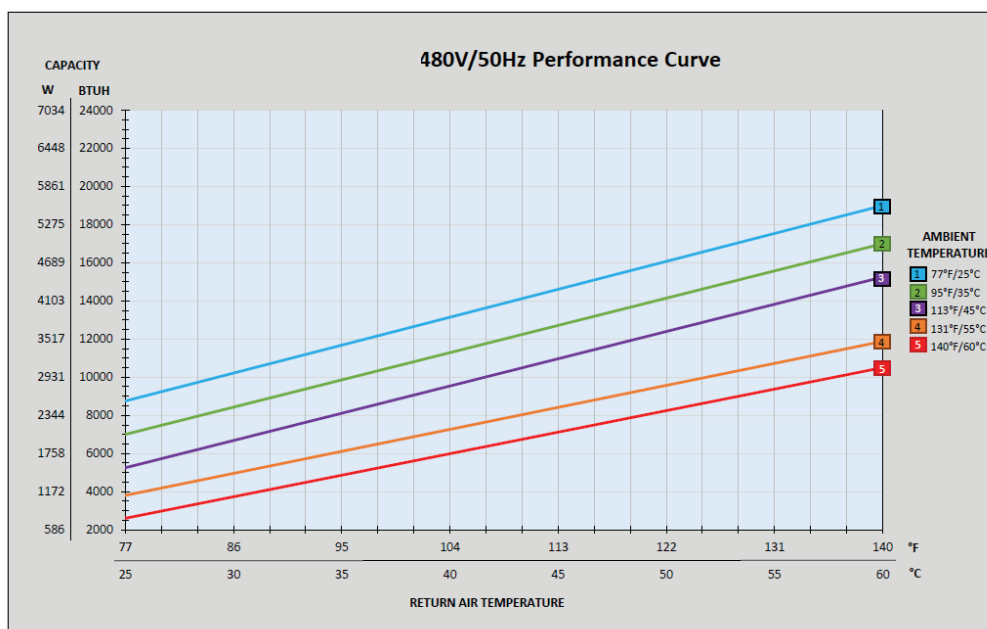
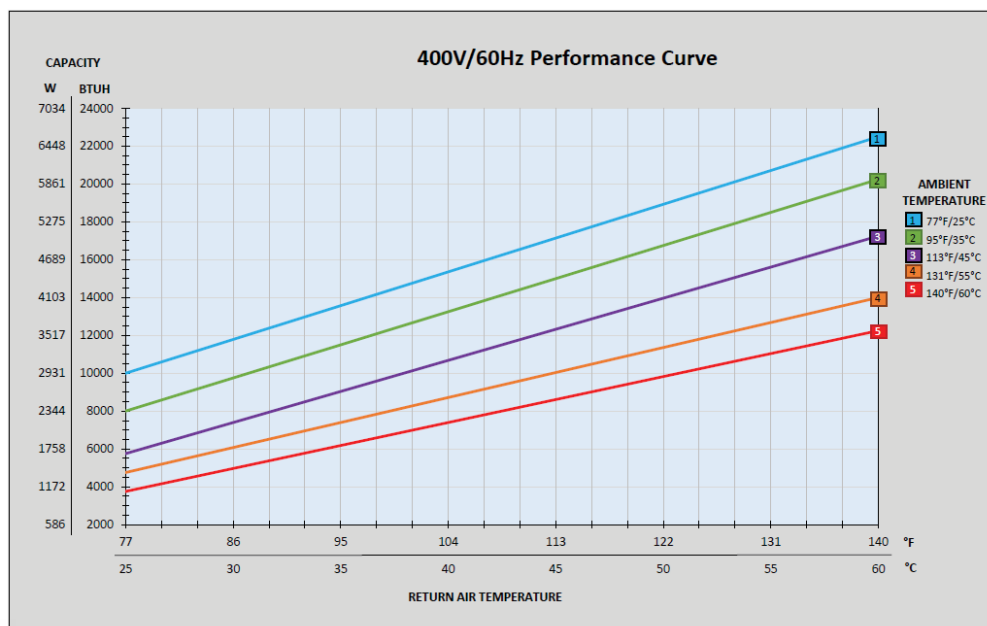


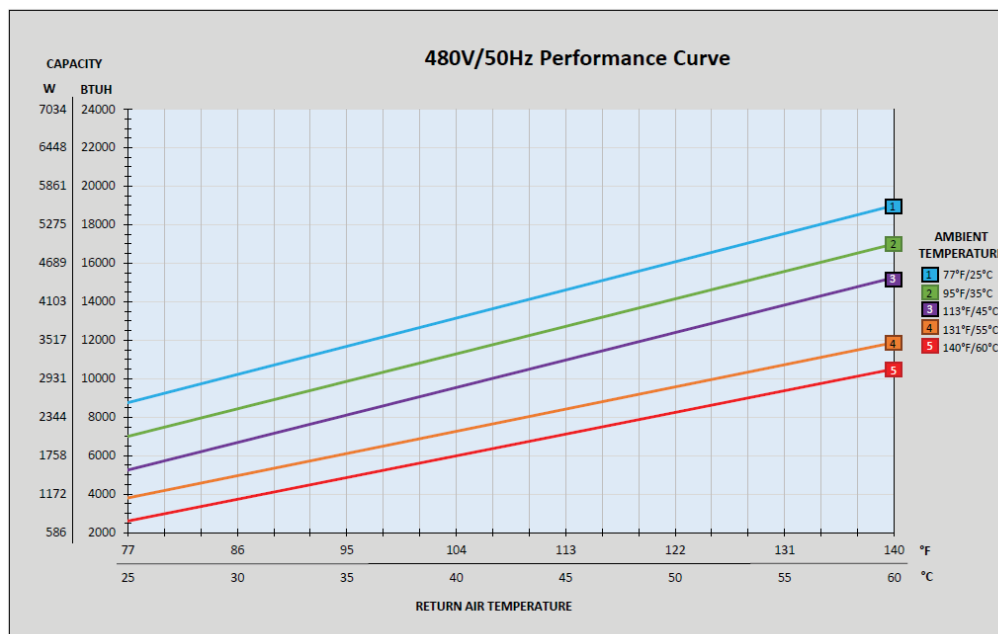
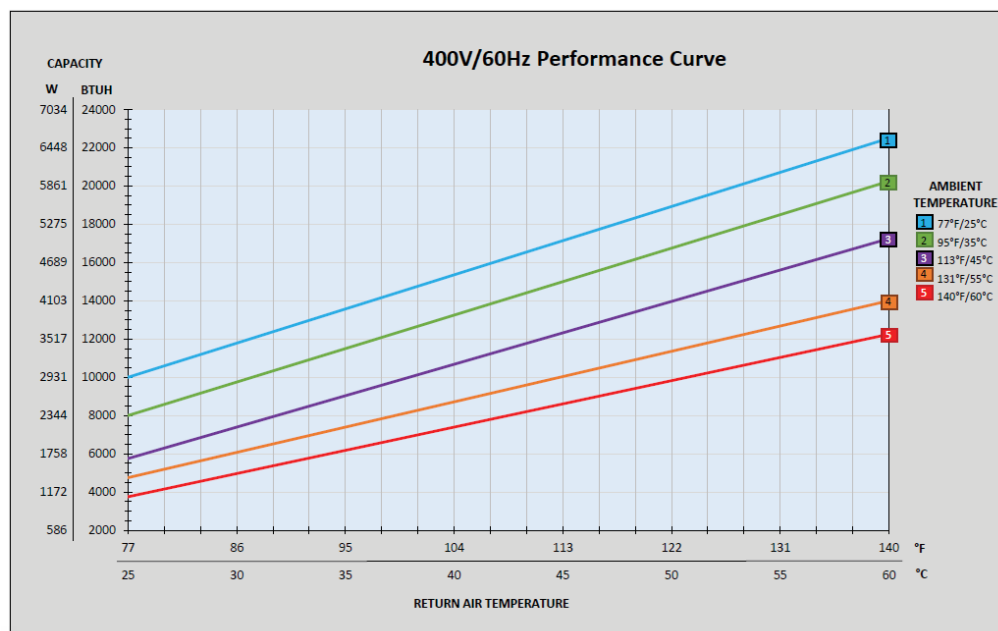


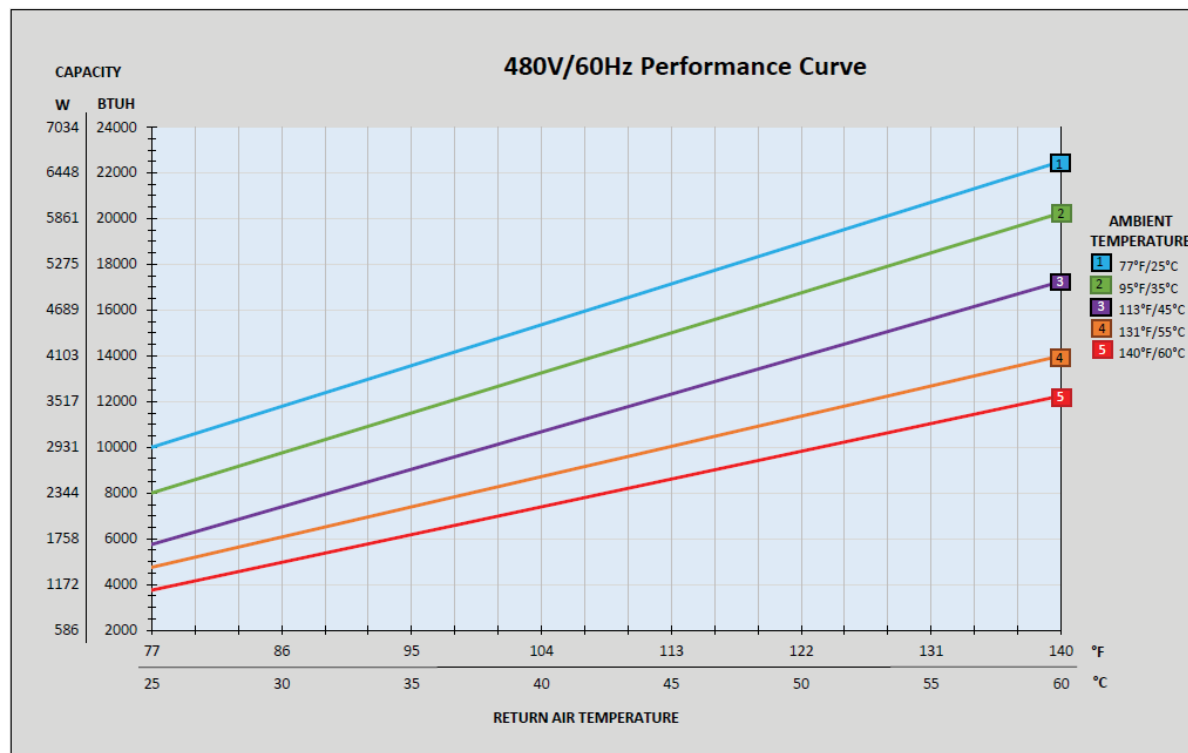
RELATED DRAWING; DO NOT CHANGE WITHOUT AUTHORIZED PERSON APPROVAL

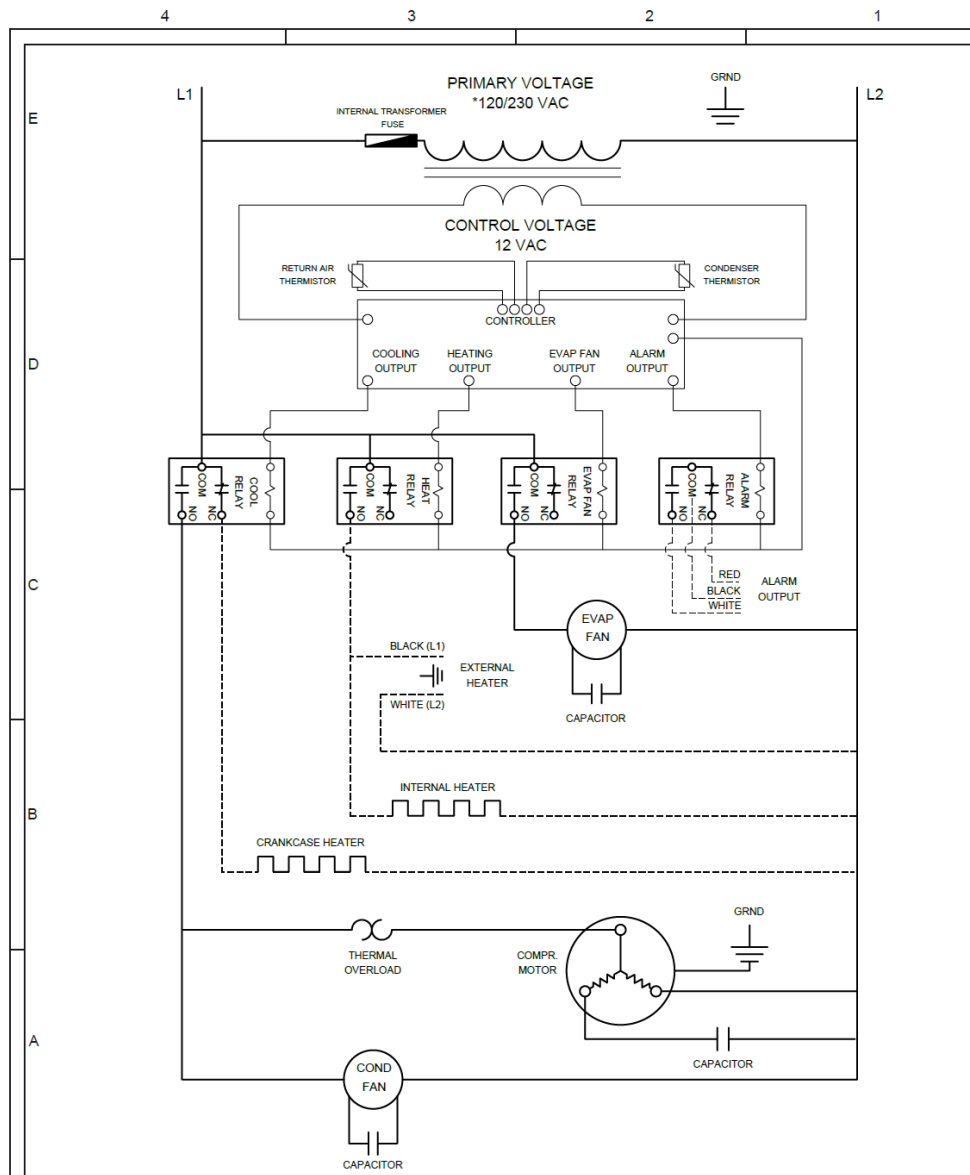
VERIFY DIMENSIONS BEFORE CUTTING











— LINE VOLTAGE
 — CONTROL VOLTAGE (LOW)
 - - - - - OPTIONAL



